

LIVING THINGS AND LIFE PROCESSES



ALL LIVING THINGS BELONG TO A KINGDOM.

All the individuals in a kingdom share similar characteristics.

There are 3 kingdoms!



ANIMAL KINGDOM

Animals can move around. They eat other living things.



PLANT KINGDOM

Plants can't move around. They make their own food.



FUNGI KINGDOM

Fungi can't move around. They eat the remains of living things.



LIFE PROCESSES

The three life processes of all living things are interaction, nutrition, and reproduction.

INTERACTION

Through the process of interaction, all living things react to their environment.



NUTRITION

Through the process of nutrition, all living things obtain the nutrients they need to live.



REPRODUCTION

Through the process of reproduction, all living things make new individuals.



WHICH IS THE
CORRESPONDING LIFE
PROCESS?















HOW DO ANIMALS AND
PLANTS REACT TO THEIR
ENVIRONMENT?

ANIMALS

They use their **sense organs** to see, hear, taste, feel, or smell.

They use their **nervous system** to process the information.

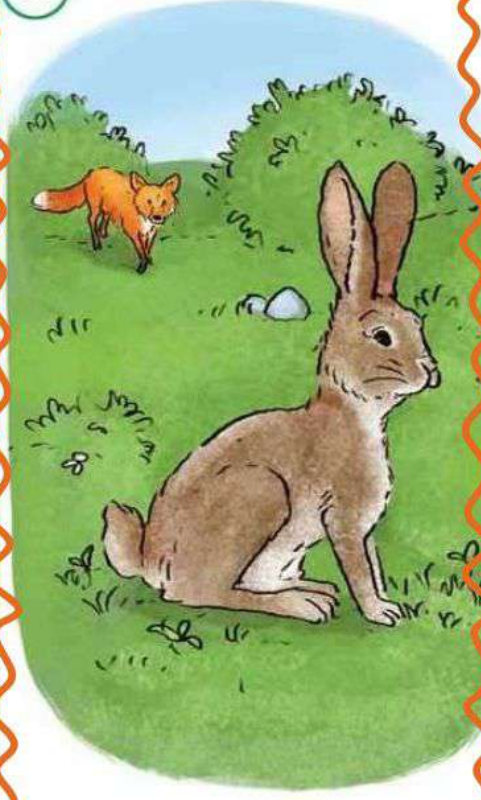
They respond to the information using their **locomotor system** by moving their muscles and bones.

1



The rabbit hears the fox's footsteps.

2



The rabbit's brain sends a message to its locomotor system: 'Run quickly!'

3



The rabbit runs and escapes down its hole.

PLANTS

Plants react to changes in light, humidity, temperature, and movement by moving one or more of their parts.



Flowers face the sun to receive its energy.



The roots of plants grow towards water.

HOW DO ANIMALS AND
PLANTS OBTAIN
NUTRIENTS?

ANIMALS

Animals eat other living things. They have a **digestive system** to obtain nutrients. This is called **heterotrophic**.

Depending on what they eat, animals can be:

Hervibores: eat only plants

Carnivores: eat only other animals

Omnivores: eat plants and other animals.



Spiders are carnivores.

Hedgehogs are omnivores.



Giraffes are herbivores.

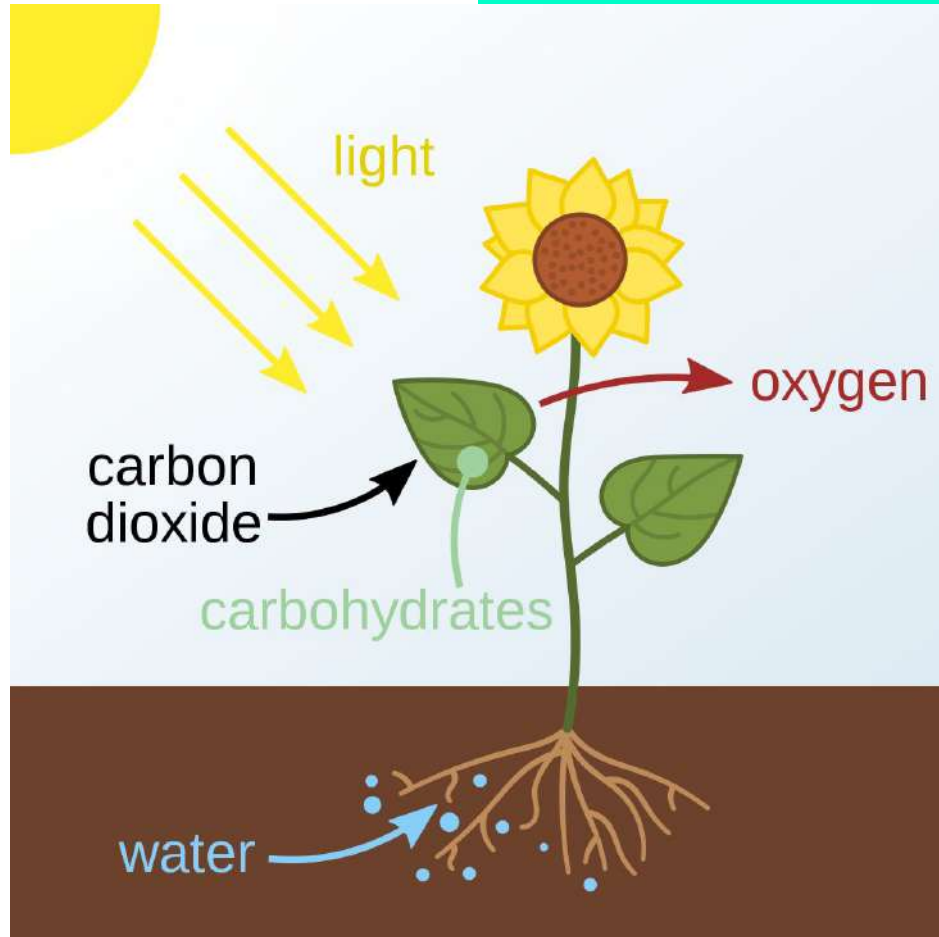
PLANTS

Plants obtain nutrients from their environment and make them into food. This is an example of **autotrophic**.

Through the **roots**, they absorb water and minerals from the soil.

Through the **leaves** they obtain sunlight and carbon dioxide from the air.

Plants use energy from the sunlight to make food and transport it over the plant.



HOW DO ANIMALS AND
PLANTS REPRODUCE?

ANIMALS

Animal reproduction can be:

Asexual: an animal makes a new individual from a part of its body.

Sexual: a male and female mate. After that, the new individual forms.

Most animals reproduce sexually. They can be oviparous or viviparous.

Oviparous: After a male and female mate, each baby forms inside an egg. The baby grows inside until it is big enough.



Viviparous: After a male and female mate, babies grow inside the mother until it is big enough to be born.



PLANTS

Plant reproduction can also be:

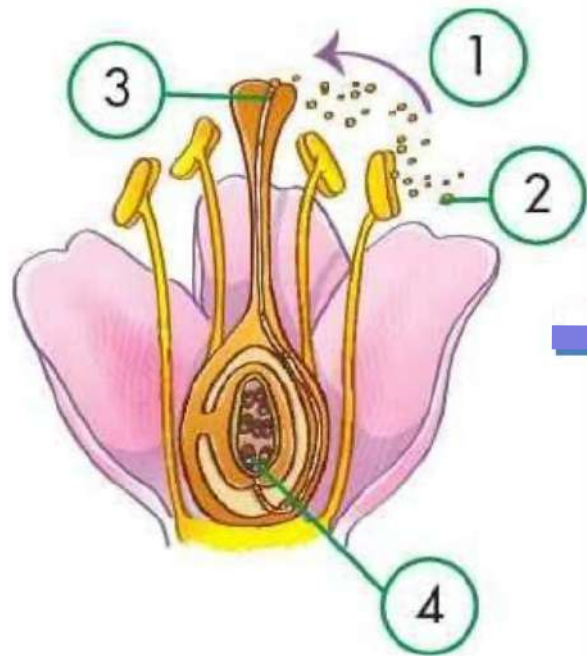
Asexual: a part of the plant makes a completely new individual. For example, a spider plant.

Sexual: in it there are three processes:

1. Pollination
2. Fertilisation
3. Germination

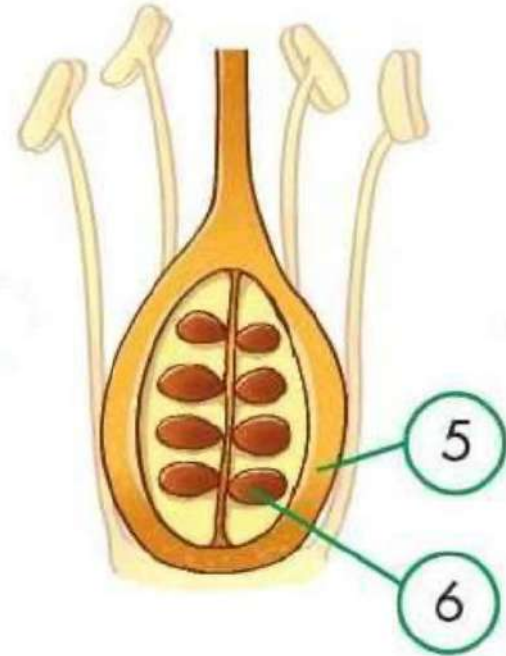


1 POLLINATION



Pollen grains (1) travel from the stamen (2) to the stigma (3).

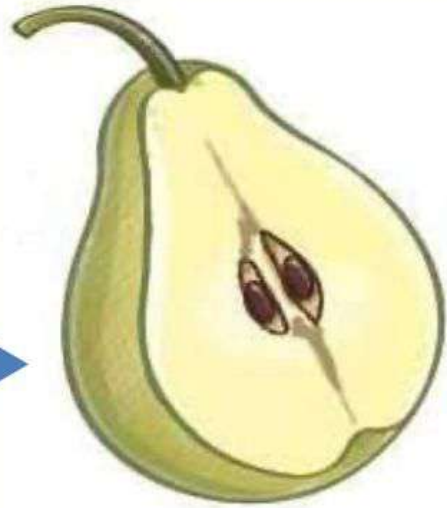
2 FERTILISATION



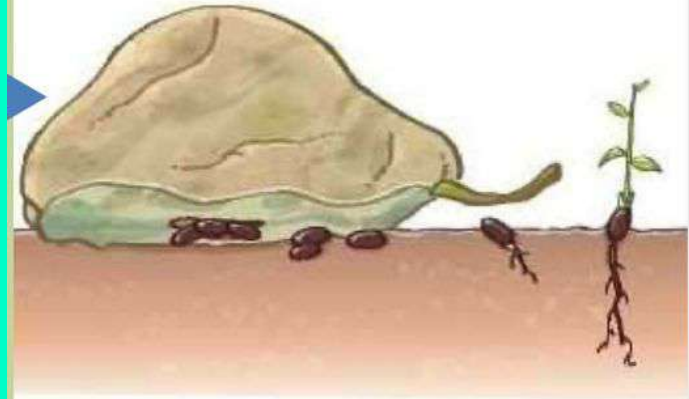
A pollen grain fertilises an ovule (4) in the ovary (5) and makes a seed (6).

3

GERMINATION



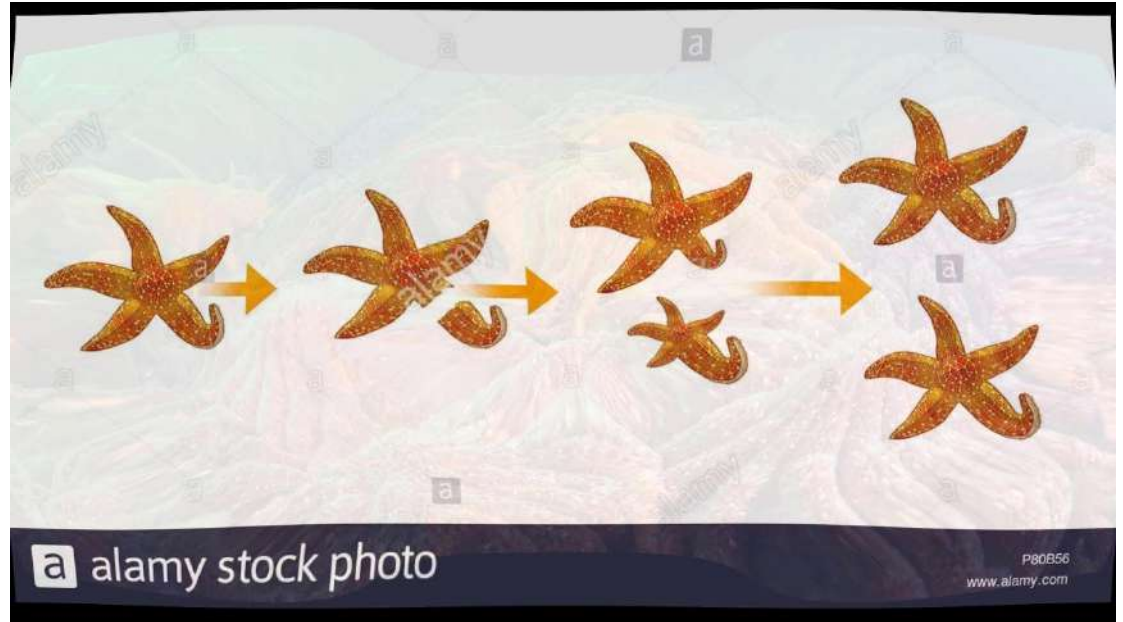
The ovary develops into a fruit.



The seed lands on soil and grows tiny roots and a stem.

STARFISH

It can make a complete new starfish from one of its arms.

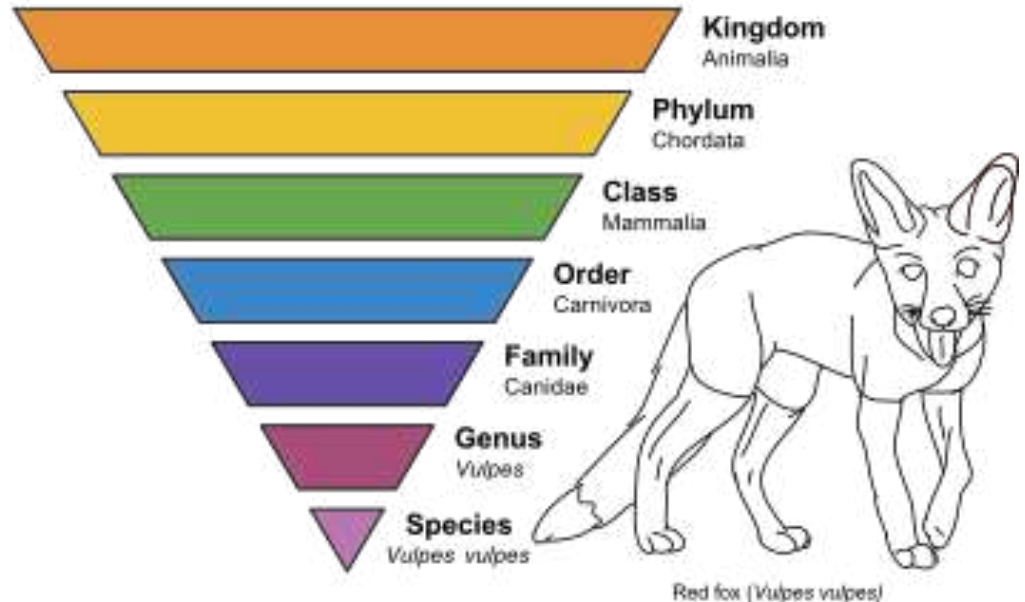


TAXONOMY...

The science that classifies living beings

Taxa:

- Kingdom
- Phylum
- Class
- Order
- Family
- Genus
- Species



TAXONOMY CONTINUED...

Animalia (animals)

Chordata (chordates)

Vertebrata (vertebrates)

Mammalia (mammals)

Carnivora (carnivores)

Felidae (cats)

Felis }
catus } (domestic cats)



THE FIVE KINGDOMS...

1. Kingdom



2. Kingdom Protocista



3. Kingdom Fungi



4. Kingdom Plantae



5. Kingdom Animalia



DID YOU KNOW??

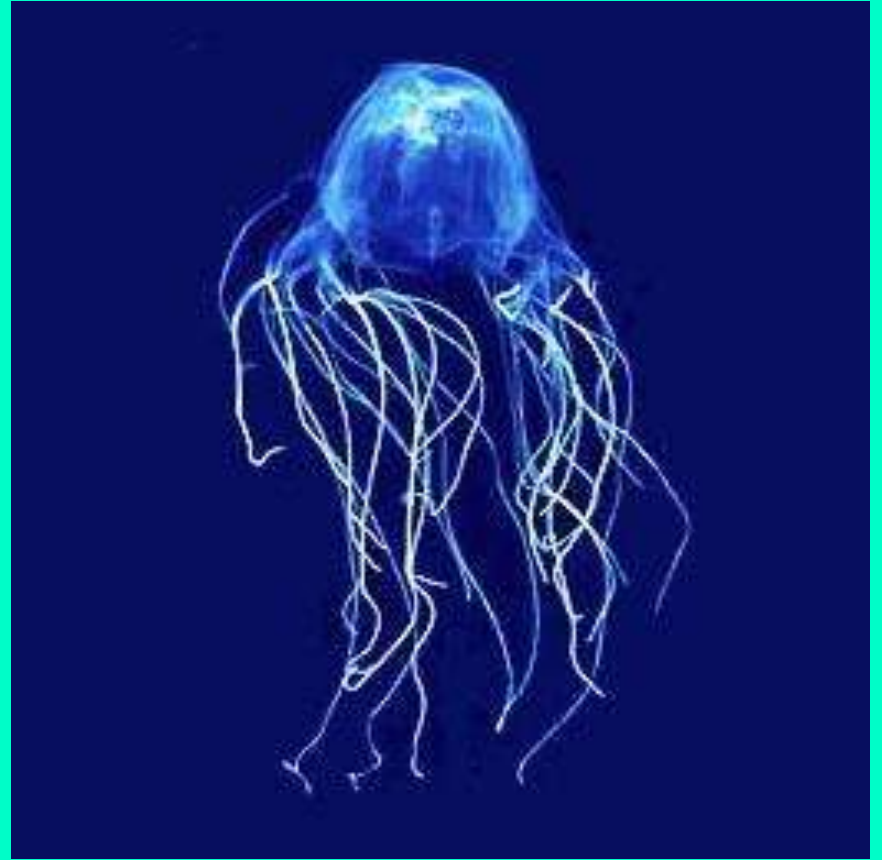
THE GIRAFFE IS THE
ONLY MAMMAL THAT
DOESN'T HAVE VOCAL
CHORDS SO IT IS
COMPLETELY MUTE



THE TONGUE OF THE
BLUE WHALE WEIGHS
AS MUCH AS AN
ADULT ELEPHANT



IF A JELLYFISH CALLED
'SEA WASP' STINGS YOU,
YOU HAVE 45 SECONDS TO
LIVE. IT'S THE MOST
POISONOUS ANIMAL IN
THE WORLD



THE BIGGEST
JELLYFISH IN THE
WORLD.



THE TONGUE OF THE
GIRAFFE CAN
MEASURE 50
CENTIMETERS.



shutterstock.com • 168606374

THE DRAGONFLY
LIVES ONLY ONE
DAY.



AN ELEPHANT'S
PREGNANCY LASTS
ALMOST TWO YEARS.



A HIPPO RUNS FASTER
THAN A MAN.



THE GIRAFFE SLEEPS
ONLY 7 MINUTES PER
DAY AND IT DOES IT
STANDING UP.



THE BRAIN OF A
CROCODILE IS AS BIG
AS A PERSON'S
THUMB.



IT IS PHYSICALLY
IMPOSSIBLE FOR PIGS
TO LOOK AT THE SKY.



THIS WORLD IS THE
HOME OF LIVING
THINGS

